

Forgotten how you logged in?

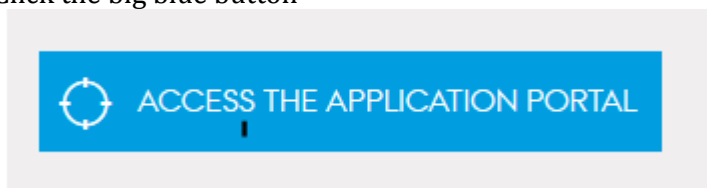
When you log in to the digital application portal to check your messages and the status of your application(s), you have to use the same login information every time.

If you have forgotten how you logged in the first time you can find the right way to log in by trial and error.

By following this link you can access the application portal

<http://kandidat.au.dk/en/admission/application-procedure/>

Click the big blue button



The application portal welcome page presents you with three options: Log in, Log in as a self-registered user and Log in with NemID.

AO0001 - Welcome to the Application Portal

Welcome to the joint application portal for master's programmes, electives, continuing and further education and training at the Danish universities.

Select how you want to log in:

In order to use the portal you must log in using one of the following:

- If you already have a login at a Danish University, select 'Log in', after which you must select your University in WAYF-list.
- If you have previously created a user account for this portal, select 'Log in as self-registered user'.
- If you want to log in using NemID, select 'Log in with NemID'.

Important! Remember to use the same login in the future, so that you can find your applications again as they are identified by the email address, that is transferred with your 'Log in' information.

1. Log in as a self-registered user

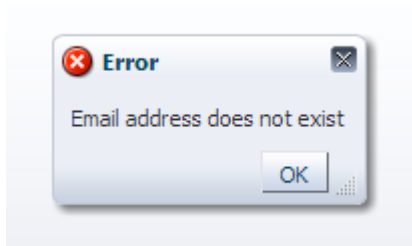
Select on the welcome page

You can now use the option:

Help! I don't remember my password.

Click the button to activate the service that gives you a new password

If you have forgotten which email address you used when you created your profile, you can type in several email addresses to check if you have used one of them to access the application portal. If you type in an address that is not known in the user database, you will get this message:




When you type in an email address that is known in the user database, you will receive an email from noreply@umit.dk which allows you to reset your password.

You can now log in to the application portal using the email address and new password. Please remember your log in information and choose [Log in as self-registered user](#) the next time you want to check the status of your application.

2. Log in as a Danish student.

Select [Log in](#) on the welcome page.

If you are a current or former student at Aarhus University please select Aarhus University on the WAYF list of institutions. If you are a student at one of the other Danish Universities please choose your home university on the WAYF list.

WAYF  Where are you from

Dansk

In order to access **STADS-DANS** please login at your institution.

You were directed to this page from **STADS-DANS**

Last choice:

[Dansk](#)

[FAQ help](#)

[Aalborg Cathedral School](#)

[Aalborg Studenterkursus](#)

[Aalborg University](#)

[Aarhus Basic Health Care College](#)

[Aarhus Business College](#)

[Aarhus Cathedral School](#)

[Aarhus School of Engineering](#)

[Aarhus State Gymnasium](#)

[Aarhus University](#)

[Adult Education Centre Djursland](#)

Once you have chosen your home university on the list, you will be redirected to your university's log in site.

Aarhus University Students only

After choosing Aarhus University on the WAYF list you will be redirected to the web site *WAYF Login for AU Services*.

Enter your username and password

A service has requested you to authenticate yourself. Please enter your username and password in the form below.

Username

Password

LOGIN

Help! I don't remember my password.

Your identity is the same as on AU's self-service, [mit.au.dk](#).

Your username is your danish CPR-number or your AU-matriculation number or an e-mail address, known by the university.

Your password is the one from AU's self-service, mit.au.dk. Try to reset it on mit.au.dk.

Read more on [WAYF on AU](#).

> [Forgotten password?](#)

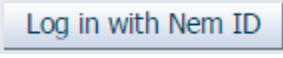
> [Register new user](#)

Enter your username and password for mit.au.dk (Self-Service). If you have forgotten your password please choose "Forgotten password?".

If you do not have an active login to the institution you have selected from the list, you will get a message that the user name or password is incorrect. Remember to check that you have chosen your home institutions on the list and you are using the correct user name and password.

If you log in to the system but you cannot see your application, it does not mean that the applications have been deleted. The applications are still in the application system and therefore, you should not create new applications for the same programmes. However, you must follow the rest of this guide to make sure that you are logging on in the same way as when you set up your application and, thus, ensure that you access your original application

3. Log in with Nem ID

Choose  on the welcome page

When you have clicked 'Log in with NemID' on you will be redirected to the login page.

Enter the user ID, password and subsequently the relevant key from your NemID key card. If you used NemID, when you first created your applications, you will now access the application system, where you can see status of your applications.

If not, please try the other log in options.

Help

If you still have problems with your log in, you can get help by filling out this [form](#). You can also write an email to ma.admission@au.dk.